

# **Town of Coventry**

# **Municipal Collection Facility**

## *Design Proposal*

Created by students at the Roger Williams University Community Partnerships Center in collaboration  
with the Town of Coventry DPW Director, Kevin McGee

Eva Alessandroni | Isabel Clark | Julia Pateman | Emmy Young

## Project Description

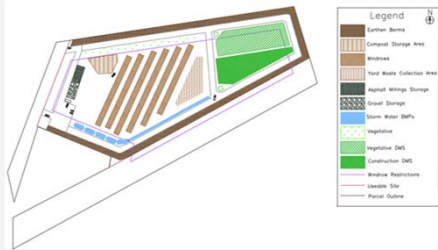
The Town of Coventry Department of Public Works (DPW) is seeking to establish a municipal collection facility, which will provide economic, environmental, and social benefits for the Town by:

- Reducing the cost of composting yard waste
- Reducing the amount of waste material entering landfills
- Eliminating the cost to buy space in external landfills

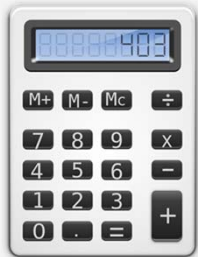
## Project Description

- Providing finished compost to residents for free
- Providing a material storage area for the DPW, allowing materials currently occupying public spaces to be stored elsewhere
- Eliminating the need to haul debris from a storm event to an external facility
- Providing an area to take debris immediately after a storm event, allowing for more efficient clearing of public roadways

SCOPE OF WORK +  
ASPECTS OF SITE



Methodology



# Precedent Research



**FEMA**

**The design proposal presented in the following slides adheres to all pertinent FEMA and RIDEM regulations**

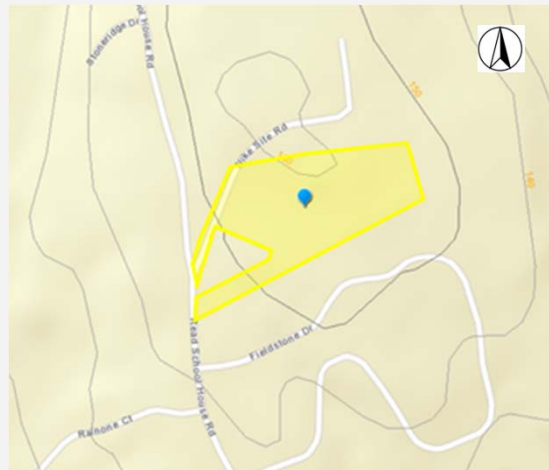
# Proposed Site Components

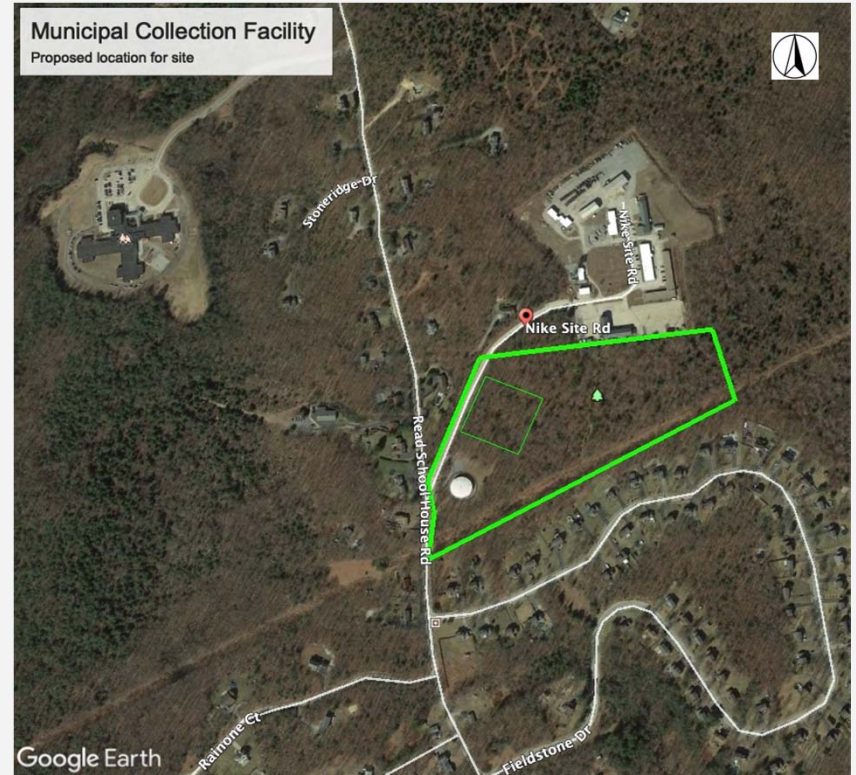
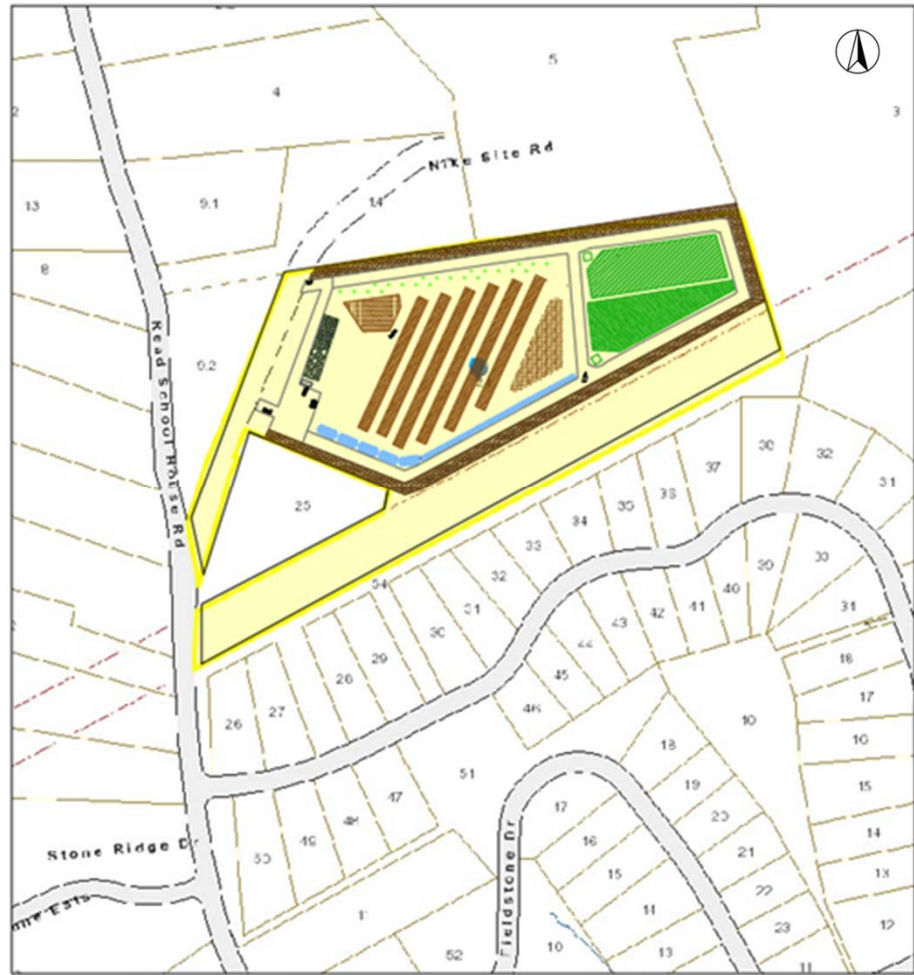
- Yard Waste Composting Area
  - Currently, residential yard waste is transported to neighboring towns' landfills at a cost
- Debris Management Site
  - Currently, the DPW has to haul debris from a storm event to the Rhode Island Resource Recovery Corporation (RIRRC) in Johnston, RI
- DPW Materials Yard
  - Currently, the DPW is storing its' materials, such as gravel and asphalt millings, in various locations throughout the town



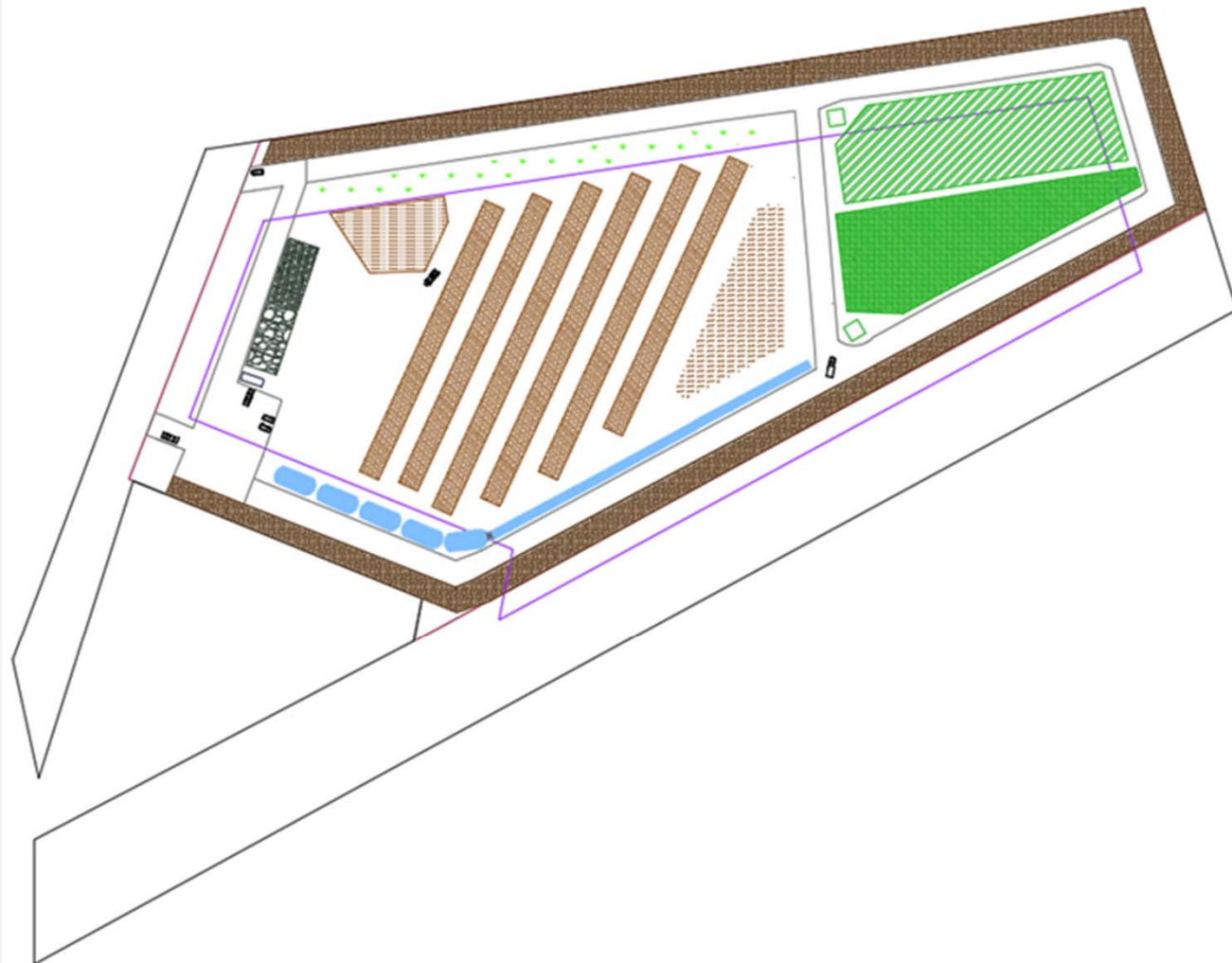
# Proposed Site

- The proposed site is located off of Nike Site Road, less than 2 miles away from the DPW
- The useable site is approximately 15 acres
- A water tower and electric lines exist adjacent to the site - ideal location with access to utilities




















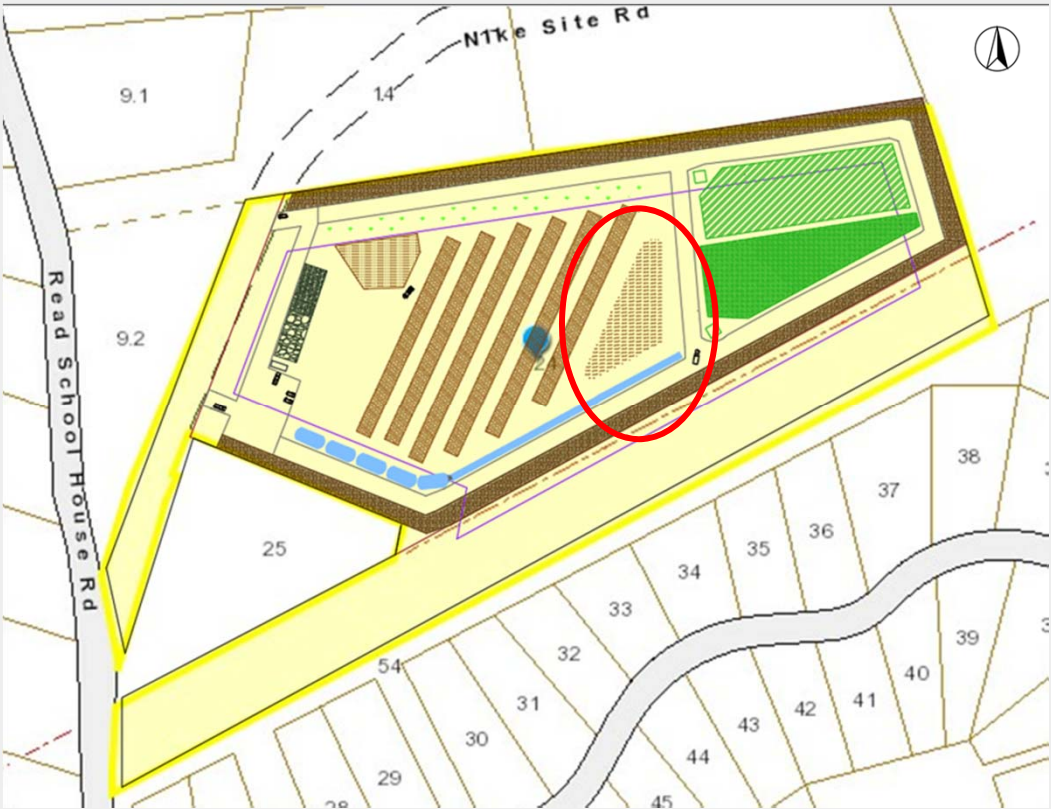


### Legend

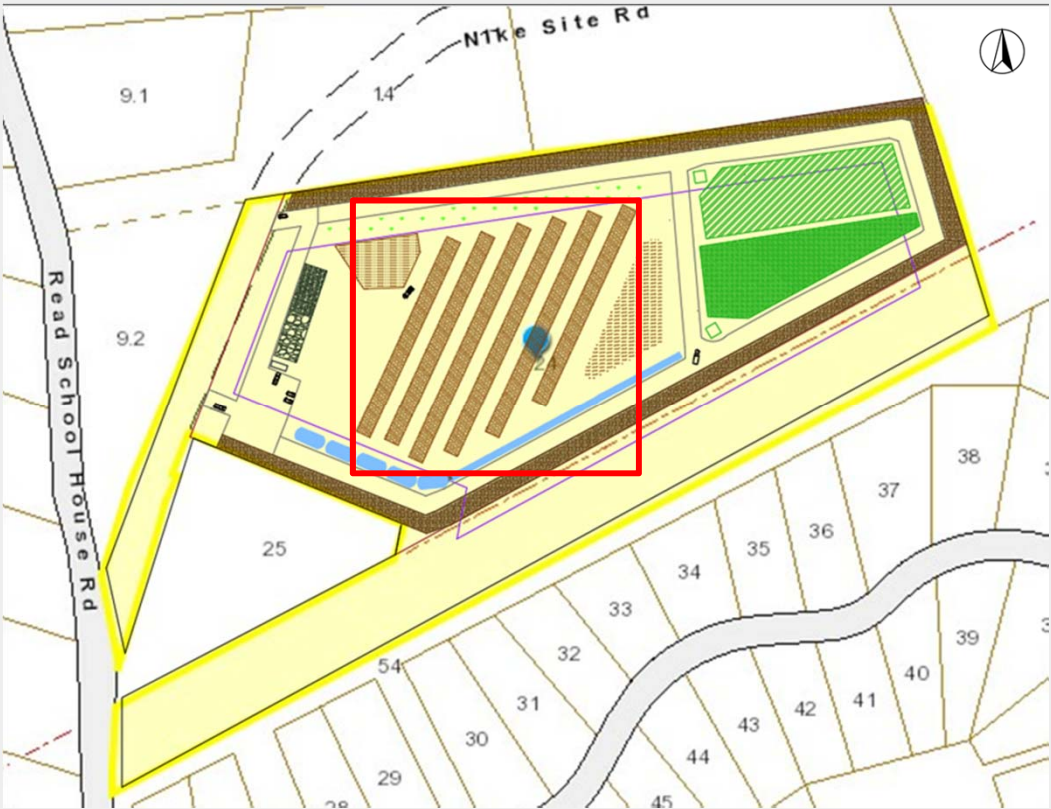
N

	Earthen Berms
	Compost Storage Area
	Windrows
	Yard Waste Collection Area
	Asphalt Millings Storage
	Gravel Storage
	Storm Water BMPs
	Vegetative
	Vegetative DMS
	Construction DMS
	Windrow Restrictions
	Useable Site
	Parcel Outline

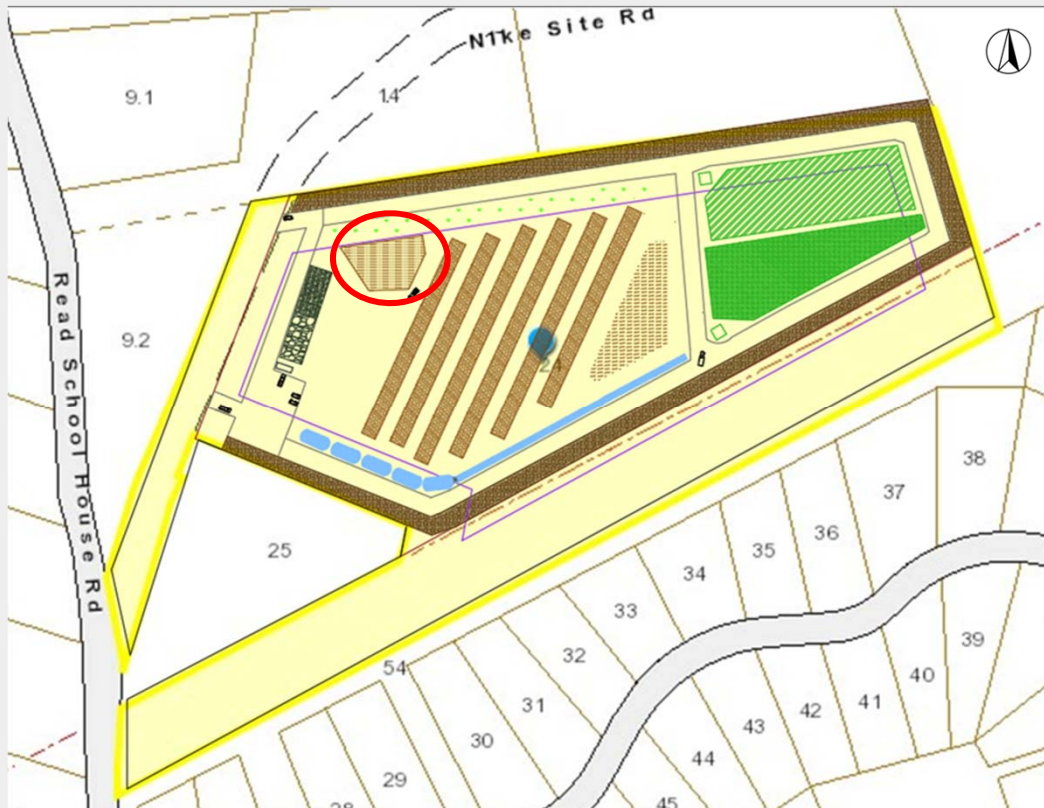
# Yard Waste Collection Area



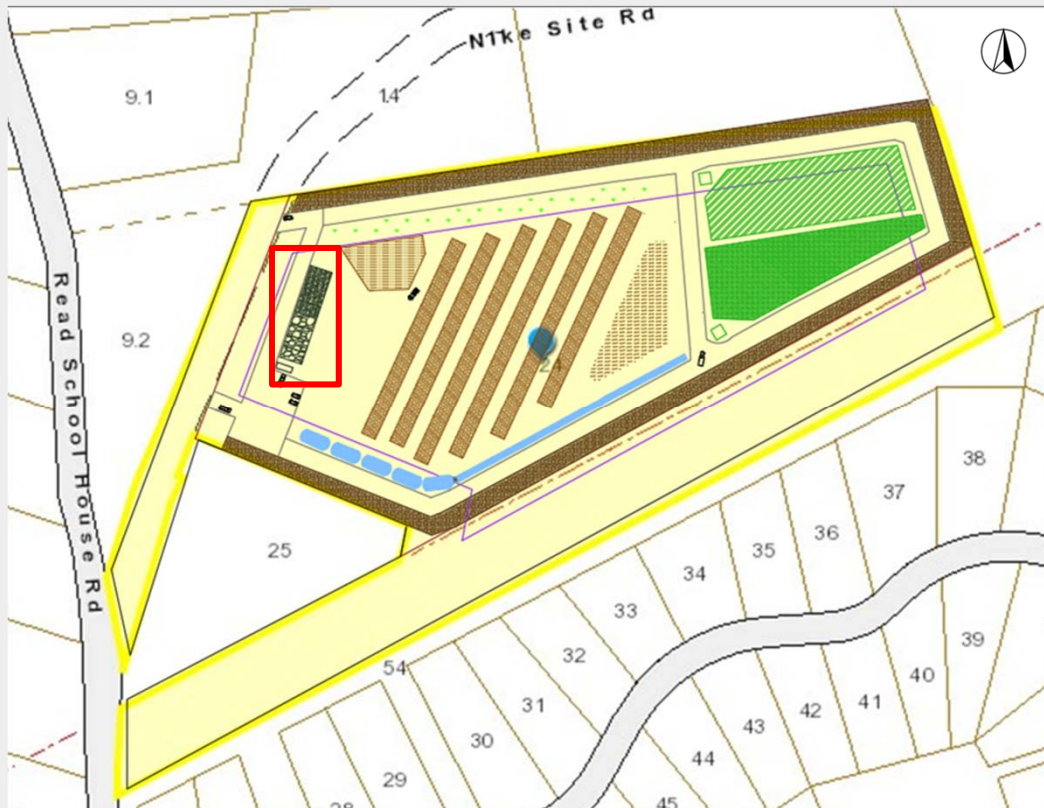
# Windrows



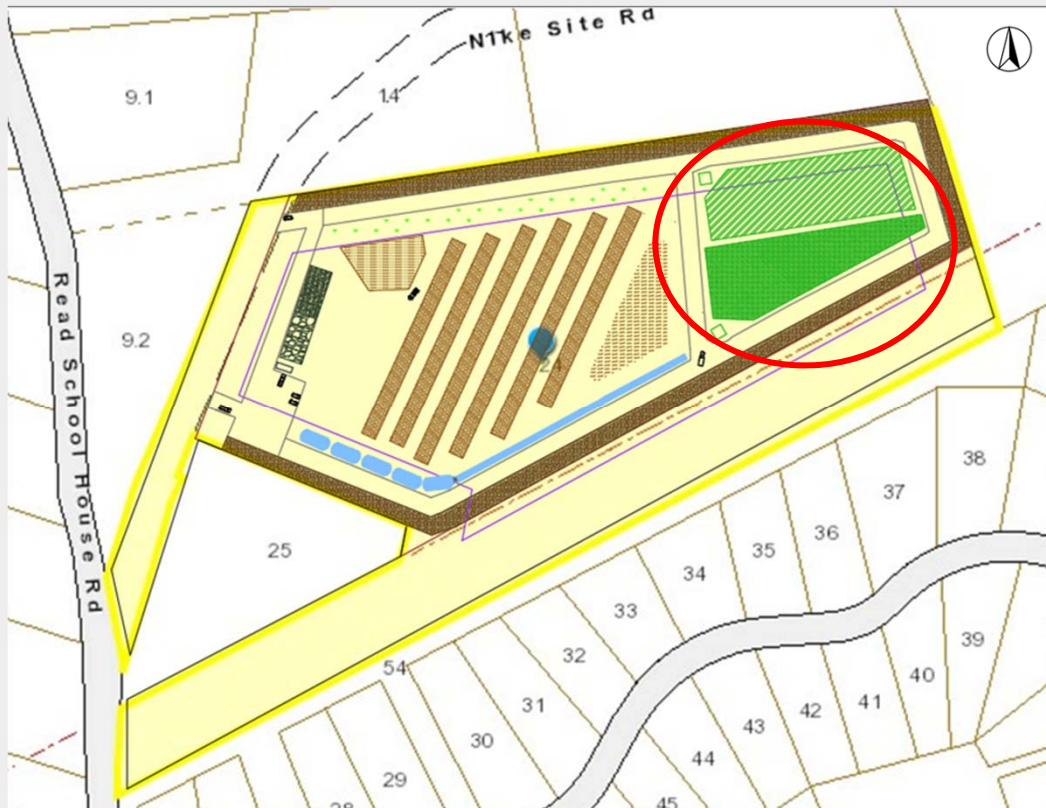
# Finished Compost Storage Area



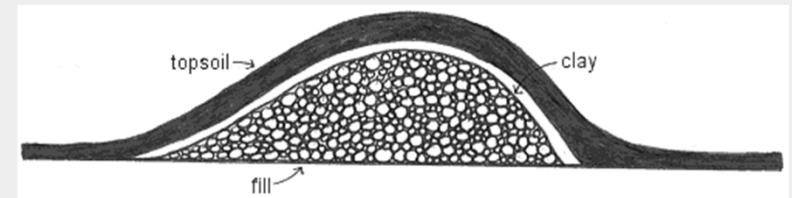
# Material Yard Storage Area



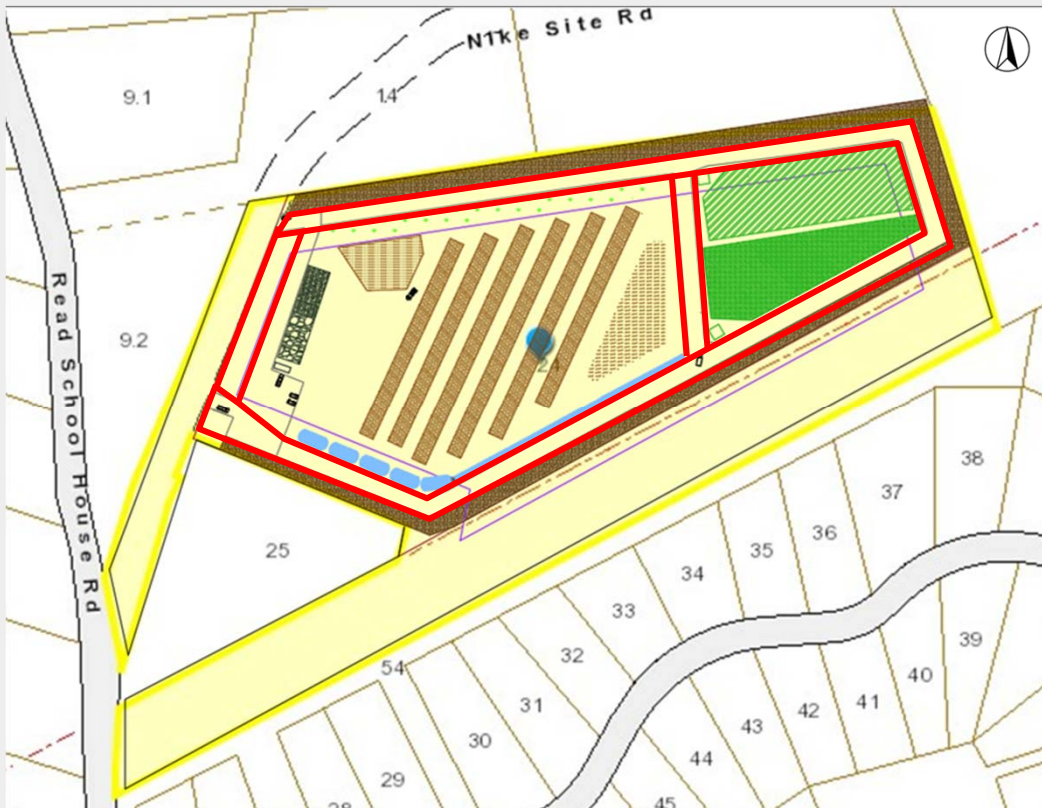
# Debris Management Site Area



# Site Management Features: Earthen Berms

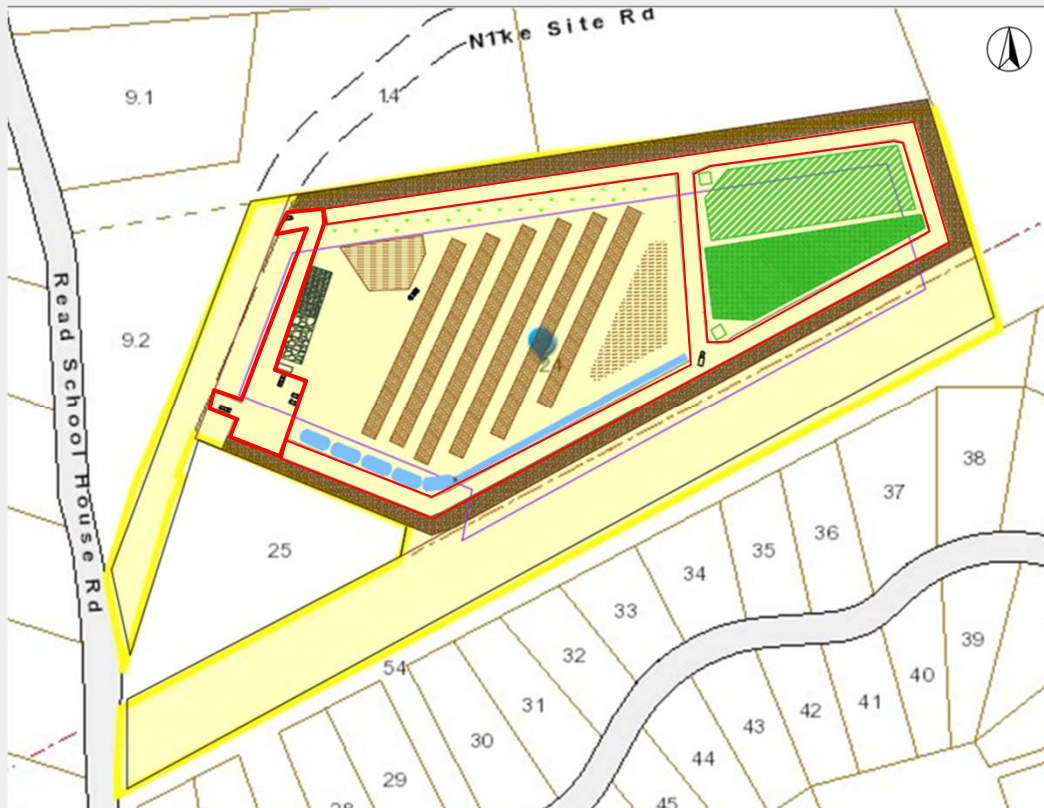


# Site Management Features: Access Road

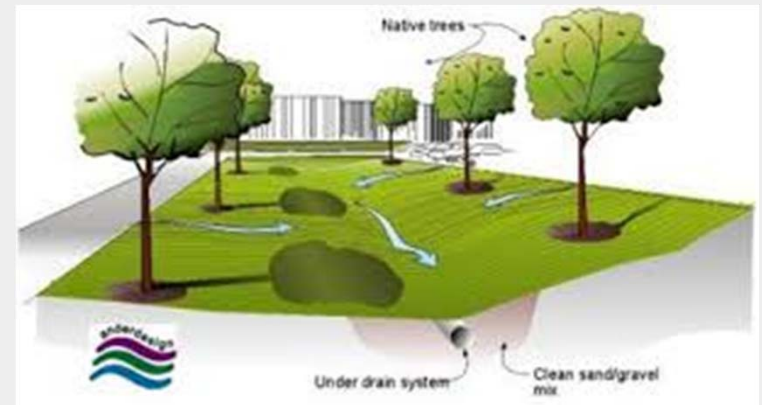




# Site Management Features: Access Road



# Site Management Features: Drainage



# Closing Remarks

